



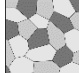
Color: **Three colors**

- Gray or white
- black
- redish or pink

Malleability :  **not malleable**

Hardness:  **not scratch by iron**

Reaction to Chloric acid :  **not fizzes**

Strucute:  **Crystalline**

Rock's name: **Granite**



Color: gray or brown or white or black

Malleability :  **not malleable**

Hardness:  **not scratch by iron**

Reaction to Chloric acid :  **not fizzes**

Rock's name: **Chert**



Color: greenish or grayn or yellowish

Malleability :  **Very malleable**

Hardness:  **Scratch by nail**

Reaction to Chloric acid :  **not fizzes**

Rock's name: **Clay**



Color: redish or purple or brown white or gray or yellowish

Malleability :  **not malleable**

Brittiness : **blecrum** 

Reaction to Chloric acid :  **not fizzes**

Rock's name: **Sandstone**



Color: white or gray or transparent

Malleability :  **not malleable**

Hardness:  **not scratch by nail**
 **scratch by iron**

Reaction to Chloric acid :  **not fizzes**

Taste : **salty**



Rock's name: **Salt**



Color: white or gray or yellowish

Malleability :  **not malleable**

Hardness:  **not scratch by nail**
 **scratch by iron**

Reaction to Chloric acid :  **fizzes**

Rock's name: **Limestone**



Color: **Three colors**

- Gray or white
- black
- redish or pink



Malleability : **not malleable**



Hardness: **not scratch by iron**



Reaction to Chloric acid : **not fizzes**



Structure: **Crystalline (Not linear)**

Rock's name: **Granite**



Color: **Multi colors**



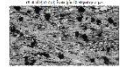
Malleability : **not malleable**



Hardness: **not scratch by iron**



Reaction to Chloric acid : **not fizzes**



Structure: **Crystalline (Linear)**

Rock's name: **Gneiss**



Color: **Dark and bright stripes**



Malleability : **not malleable**



Hardness: **not scratch by iron**



Reaction to Chloric acid : **not fizzes**



Structure: **Crystalline (Foliated)**

Rock's name: **Schist**



Color: **greenish or gray or yellowish**



Malleability : **Very malleable**



Hardness: **Scratch by nail**



Reaction to Chloric acid : **fizzes**

Rock's name: **Marl**



Color: **Black**



Malleability : **not malleable**



Hardness: **Barley scratched by iron**



Reaction to Chloric acid : **not fizzes**

Typical characteristics: Massive; sometimes has porous structure. Rock's powder is attracted to magnet.

Rock's name: **Basalt**
